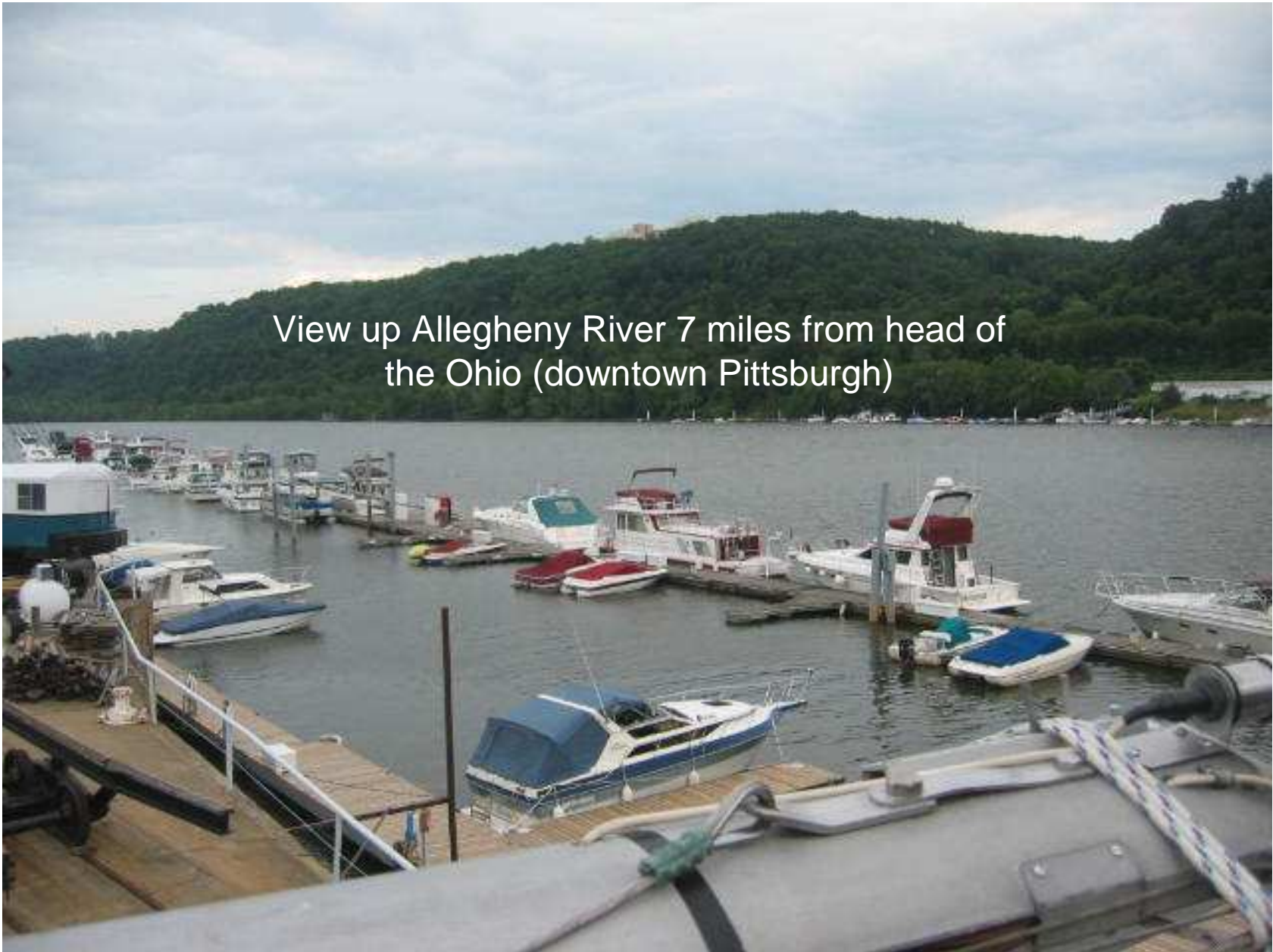


View up Allegheny River 7 miles from head of
the Ohio (downtown Pittsburgh)





Small boy supporting boat



**Seats (w/
backrests not
shown) 23"
fore/aft, 28" wide
& 16" above feet**



Table 38" above sole (about
kitchen counter ht), 26" above feet
while seated (about 3" too low)



Table fastens to underside of shelf & folds down (dotted lines point to hinge side), panel in booth floor (old bunk base) raises to form bunk at seat height



**Much storage
under each
seat (23" x
28" @ front)**



6', 200 lb man facing aft. Shoulder room a little tight, table a little low, seat too low (thighs not horz.); all fixed by lowering old bunk floor a few inches (or just live with it).





Fridge door
swing limits
raising ht. of port
bunk to bottom of
teak (6-1/2")